



# DATASCOPE Co., Ltd

connecting advanced medical technologies to better patient care

February 2026



# Company Overview

Established in 2013, we are a Thai medical device importer and distributor focused on structured market development within high-acuity hospital environments

## Operational Capabilities

- In-house Regulatory & Compliance Team
- Direct Sales Force (No Sub-Distributors)
- Biomedical Engineering & Technical Support
- New Integrated Head Office & Warehouse Facility (Under Development)

**Privately  
Owned**

*WITH ~20 FULL-TIME  
EMPLOYEES*

**20 YEARS**

*EXPERIENCE IN HOSPITAL  
BASED MEDICAL DEVICES*

**130+  
Hospitals**

*NATIONWIDE CLINICAL  
COVERAGE*



# Core Focus Areas

Dedicated to interventional and critical care environments where clinical precision and regulatory reliability are essential



## Interventional Platforms

*Cardiac Catheterization Laboratories  
Interventional Radiology (IR) Units  
Neuro Intervention Centers*



## Critical Care & Acute Settings

*Intensive Care Units (ICU / CCU)  
High-Dependency Units*



## Surgical & Hybrid Environments

*Operating Rooms (OR)  
Hybrid OR Platforms*

# Regulatory & Compliance Capability



*We maintain an in-house regulatory function responsible for structured medical devices registration and compliance management in Thailand, in accordance with the Medical Device Act B.E.2551 (2018) and amended Act B.E. 2562 (2019)*

## Regulatory Framework & Classification



**Devices Classification**  
UNDER THAI FDA RISK  
FRAMEWORK (TYPE I-IV)

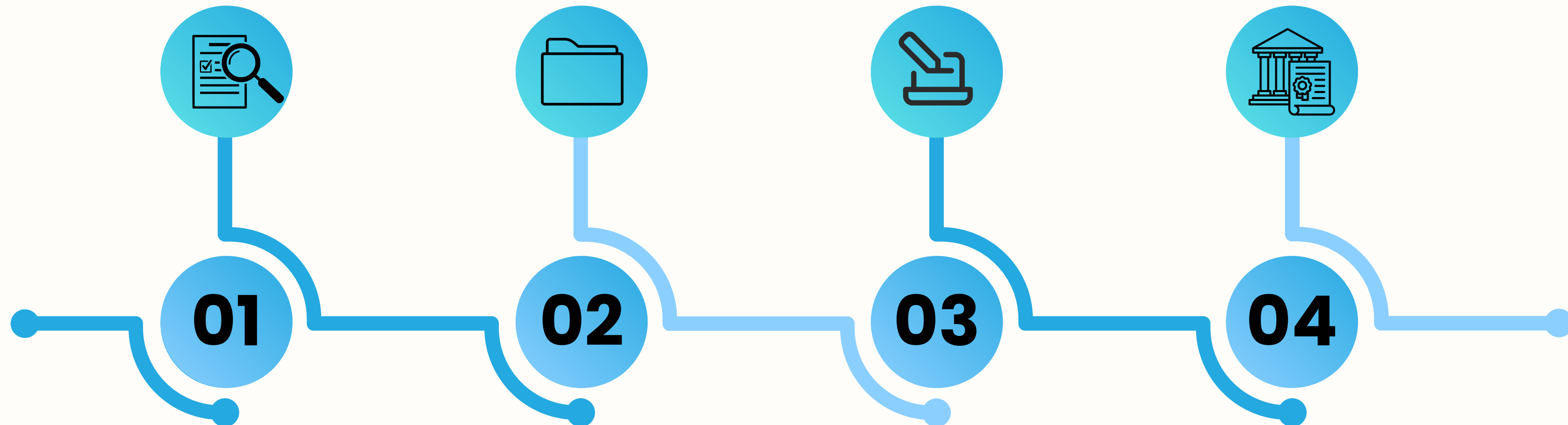
**Compliance**  
WITH MEDICAL DEVICE  
ACT B.E.2551&2562

**Alignment**  
WITH THAI FDA  
DOCUMENTATION  
REQUIREMENTS

## Scope of Regulatory Management

- Preparation and Submission of Thai FDA dossiers (Class I - IV)
- Declaration of Conformity & Letter of Authorization coordination
- Executive Summary, Risk Analysis & Clinical Documentation (Class II+)
- Labeling & IFU compliance review
- Post-market compliance & lifecycle management

# Regulatory Timeline



## Product Classification

Risk Classification (Class I-IV) under the Thai FDA framework

## Dossier Preparation

Compilation of required documentation (Class I vs Class II-IV requirements differ significantly)

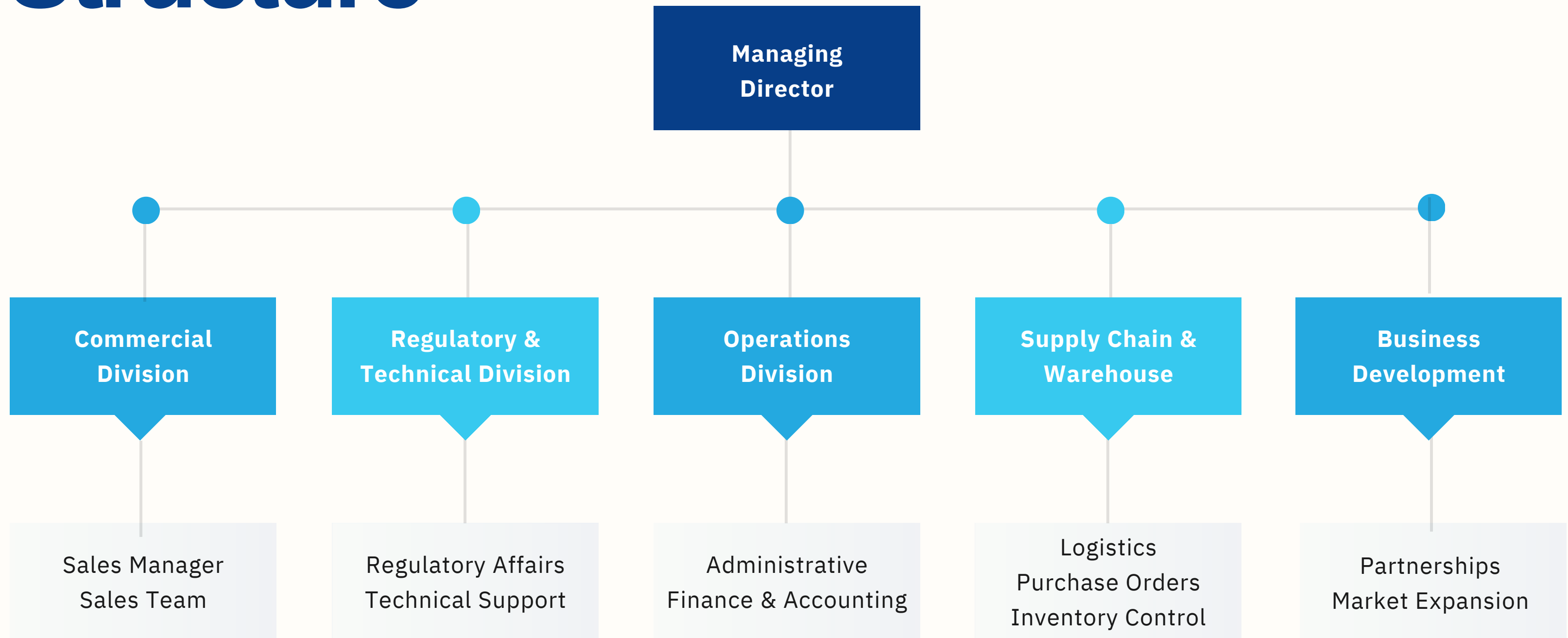
## Submission & Review

Thai FDA technical review and clarification cycle  
\*Subject to Authority Review\*

## Regulatory Approval

Following Thai FDA approval, the product license is issued, allowing authorized importation, distribution, and market launch in Thailand

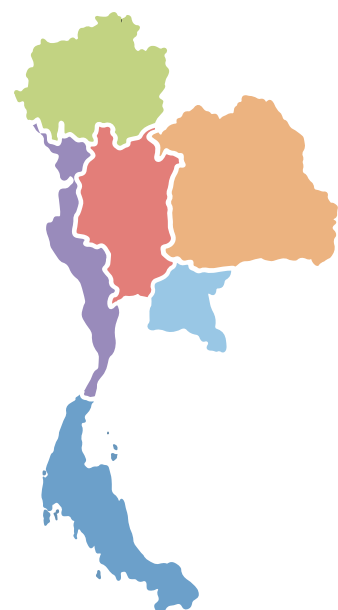
# Organizational Structure



# Clients & Market Coverage



## OUR CLINICAL FOOTPRINT

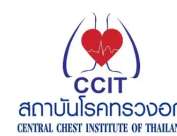


**130+ Hospitals Nationwide**  
*Interventional Cardiology Centers  
Interventional Radiology Units  
Neurovascular-Radiology Centers  
CVT Surgical Hospitals*

**High concentration in Bangkok  
and major provinces**

**Increasing Expansion  
Of hybrid OR platforms**

**Strong Government Investment  
In tertiary care capacity**



## INTERVENTIONAL PLATFORM LANDSCAPE



**Interventional Cardiology (Cath Labs)**  
*~180-250 platforms*



**Interventional Radiology**  
*~80-120 platforms*



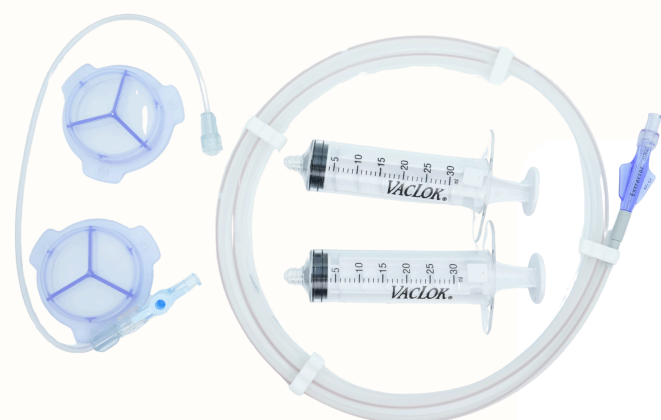
**Neurovascular / Neuroradiology**  
*~40-70 centers*

*Majority of high-complexity platforms are concentrated in tertiary academic hospitals and leading private hospital groups, with ongoing expansion in provincial referral centers*

## Interventional Cardiology & Cath Lab Consumables



• **Balloon Inflators**



• **Procedural Extractors**



• **Y-Connector**



• **Chest Drain Systems**



• **Pressure Bag**



## Critical Care & Thoracic Support

## Radiation Protection Solutions

- **Radiation Protection Gowns**
- **Protective Apparel for Interventional Environments**

*\*Selected products under regulatory process*

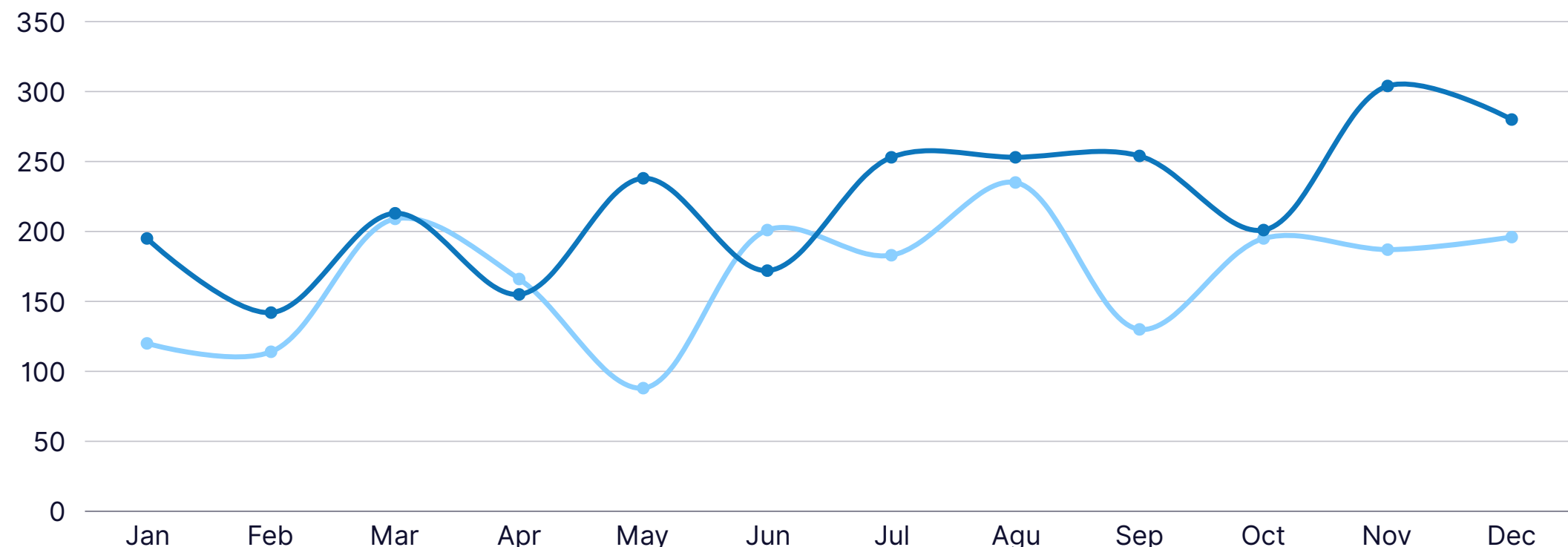
# Key Product Portfolio

*Portfolio experience within high-volume procedural environments positions Datascope to support advanced radiation protection platforms*



## Revenue Growth

- Monthly Revenue 2024
- Monthly Revenue 2025



# Growth & Performance

Converted at 35 THB/USD

## Year-On-Year Growth

**+\$543k** ↑ 26.8%  
from last period



## Key Indicators

**\$ 2.57M** Annual Revenue

**17% 3-Year CAGR**

*Demonstrating consistent year-on-year revenue expansion supported by recurring interventional consumables and stable hospital demand*

# Contact Information



## DatascopE Co.,Ltd.



+66 21179195



59/147 Soi Ramintra 103/1 Kannayao Sub district  
Kannayao District Bangkok, 10230



[datascopE@gmail.com](mailto:datascopE@gmail.com)

***WE LOOKING FORWARD TO BUILD A LONG-TERM PARTNERSHIP IN THAILAND***

